

JUSTEC2018 Accommodation

Information as of Marth 7th, 2018



Reservation site will be available from May

First-come, First-served!

I. Hotel Rubino Kyoto Horikawa (ホテルルビノ堀川)

Check-in: Sept. 13th, 2018 – Check-out: 2018-Sept-Sept. 17th, 2018

- Single /twin room (single use) with breakfast: 11100 yen (including tax and service fee)
- Single /twin room (single use) without breakfast: 9600 yen (including tax and service fee)
- Twin room with breakfast: 8000 yen per person (including tax and service fee)
- Twin room without breakfast: 6500 yen per person (including tax and service fee)

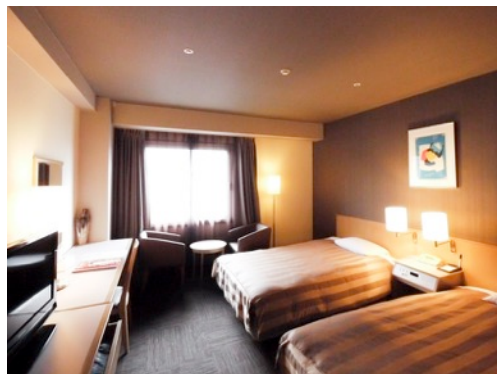
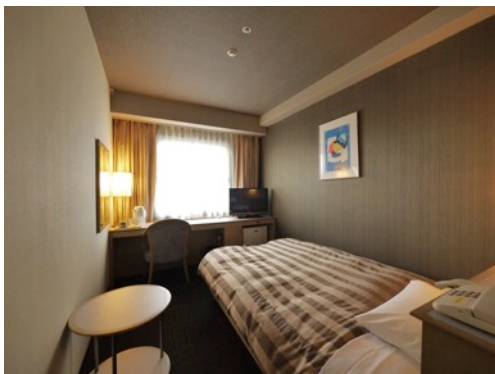


Access to Bukkyo University: About 20–25 minutes by bus (About 15 minutes by taxi)

II. ARK Hotel (アークホテル)

Check-in: Sept. 14th, 2018 – Check-out: 2018-Sept-Sept. 17th, 2018

Coming later.



Access to Bukkyo University: About 25 minutes by bus (About 20 minutes by taxi)